

## PREPAREDNESS FOR PERSONS WITH SPECIAL NEEDS

- ✓ Contact your local emergency information management office. Many local emergency management offices maintain registers of people with disabilities so they can be located and assisted quickly in a disaster.
- ✓ Consider getting a medical alert system.
- ✓ Team up with a family member, friend, neighbor, or other available person who can assist you, and be sure they are familiar with your special needs.
- ✓ Determine the locations of wheelchair accessible emergency shelters, if necessary.
- ✓ Find out the locations of emergency shelters that do or do not accept service animals.
- ✓ Prepare a kit (in addition to emergency kit) that includes a 14-day supply of all medications. Include medical information (e.g., detailed information about the specifications of your medication regimen, a list of the style and serial numbers of medical devices such as pacemakers, names and locations of doctors, diagnosis if relevant, special food requirements or allergies, etc.).
- ✓ Have oxygen, catheters, and other medical or special equipment on hand.
- ✓ Store back-up equipment, such as a manual wheelchair, at a neighbor's home, school, or workplace.
- ✓ Prepare for the requirements of your working service animal and be aware they may become disoriented in an emergency.
- ✓ Within reach of your bed have a flashlight, shoes, wheelchair, or cane -- whatever you need (including any mobility devices) to get out of bed and move around.
- ✓ Have a whistle attached to a flashlight, and one also in your emergency kit. This will help attract attention to your location.
- ✓ If you require respirators or other electricity dependant medical equipment, make prior medical arrangements with your physician. Also, register in advance with your local power company.
- ✓ If you require oxygen, check with your supplier about emergency plans.
- ✓ If you have a severe speech, language, or hearing disability:
  - ✓ Store a writing pad and pencils to communicate with others.
  - ✓ Remind people that you cannot hear and ask them to be your source of emergency information as it comes over their radio or TV.

## EMERGENCY TELEPHONE NUMBERS

This address \_\_\_\_\_

\_\_\_\_\_

This phone number \_\_\_\_\_

Rescue Squad \_\_\_\_\_

Ambulance \_\_\_\_\_

Fire Department \_\_\_\_\_

Police \_\_\_\_\_  
GA Poison Control Center 800-282-5846 or  
404-616-6699

Doctor/Dentist \_\_\_\_\_

Doctor/Dentist \_\_\_\_\_

Father's Work \_\_\_\_\_

Mother's Work \_\_\_\_\_

Electric Company \_\_\_\_\_

Gas/Oil Company \_\_\_\_\_

Water Department \_\_\_\_\_

School(s) \_\_\_\_\_

Day Care \_\_\_\_\_

Local Contact \_\_\_\_\_

Phone \_\_\_\_\_

Out of State Contact \_\_\_\_\_

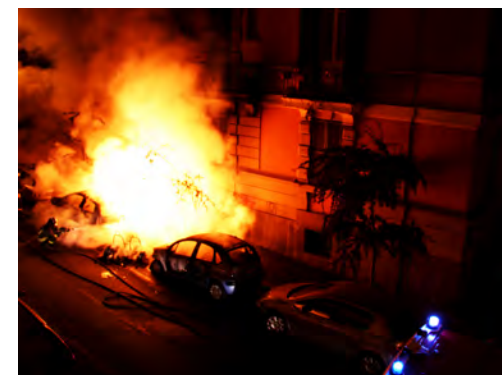
Phone \_\_\_\_\_

Other \_\_\_\_\_

Phone \_\_\_\_\_

**FILL OUT AND COPY THIS PAGE  
FOR HOME AND WORK.**

**MRC GEM**  
[HTTP://WWW.MRCGEM.COM](http://www.mrcgem.com)



## Personal Emergency Preparedness

**The threat of a natural disaster or terrorist incident is greater than ever. Nobody is immune. Each of us is responsible for preparing ourselves and our families.**

**This brochure is intended to help you and your family take the steps necessary to survive a disaster.**

This brochure is based on one designed by the Department of Veterans Affairs, Veterans Health Administration, Office of Public Health and Environmental Hazards.

## PRIOR TO AN ATTACK

- ✓ Prepare for the possibility of a terrorist incident in your area, stay informed.
- ✓ As appropriate, adapt the techniques used to prepare for tornadoes, fires, other emergencies.
- ✓ Be prepared and observe your environment. Terrorists most often strike with little or no warning.
- ✓ Use caution when you travel.
- ✓ Locate stairways and emergency exits and develop plans for evacuating buildings, subways, and crowded public areas.
- ✓ Develop a Family Emergency Plan.
- ✓ Assemble and maintain an Emergency Supply Kit.

## EXAMPLES OF COMMON TERRORIST TARGETS

- Airports
- Government buildings
- Hospitals
- Tourist attractions
- Transit systems
- Military bases
- Embassies
- Arenas, stadiums
- Educational institutions, churches, synagogues
- Communications networks
- Utilities, power plants

## IN THE EVENT OF AN ATTACK

### Explosion

- ✓ Remain calm.
- ✓ If objects begin to fall, take cover under a desk or sturdy table.
- ✓ Exit the building as quickly as possible.

### Trapped in debris

- ✓ Tap on a pipe or wall so that rescuers can hear where you are.
- ✓ If possible, use a flashlight or whistle to signal rescuers regarding your location.
- ✓ Cover your mouth with a handkerchief or clothing.
- ✓ Stay in your area so that you don't kick up dust.

### Fire

- ✓ Stay low to the floor at all times and exit the building as quickly as possible.
- ✓ Use a wet cloth to cover your nose and mouth.
- ✓ Use the back of your hand to feel closed doors. If the door is not hot, brace yourself against the door and open it slowly. Do not open the door if it is hot. Seek another escape route.
- ✓ Use appropriate fire exits and stairs, not elevators.

## RADIATION EXPOSURE

Highest-risk areas are those in which buildings are likely to be destroyed by blast or fire, or where a person would be in the open for the first 2 weeks.

### Shielding

Place the most heavy, dense materials available between you and the source of the radiation.

### Distance

The more distance between you and the source of the radiation, the less radiation you will receive.

### Time

Most radioactivity loses its strength fairly quickly. Limiting the time spent near the source of radiation reduces the amount of radiation exposure you will receive.

## COMMON EMERGENCY PROTECTIVE ACTIONS Shelter-in-Place or Evacuation

*Shelter-in-place means to stay indoors.* If shelter-in-place is recommended, move all people and pets inside. Local officials will provide instructions on necessary actions. These can include:

- ✓ Closing all windows and doors.
- ✓ Taking emergency supply kit with you.
- ✓ Turning off air-conditioning, ventilation systems.
- ✓ Closing fireplace damper.
- ✓ Taping around doors, windows, exhaust fans, or vents.
- ✓ Wetting towels and placing in crack under door.
- ✓ Staying away from windows.

Stay in the room and listen to emergency broadcasts on radio and TV until told to evacuate.

*Evacuation means to leave the area of actual or potential hazard.*

- ✓ If an evacuation is ordered, follow the instructions of local officials regarding evacuation routes and the location of shelters.
- ✓ Take emergency supply kit with you.
- ✓ Close car windows and air vents and turn off heater or air conditioner.

## FAMILY EMERGENCY PLAN

- ✓ Learn what possible emergency events could occur and discuss the dangers with family members.
  - ✓ Take steps to prepare your family for disaster, such as:
    - ✓ Posting emergency phone numbers
    - ✓ Selecting local and out-of-state family contacts
    - ✓ Assembling emergency supply kits for each member of your household
    - ✓ Having a family meeting to discuss what each member would do, and how you would connect if separated
    - ✓ Keeping important records in a safe place
- Practice your Family Emergency Plan so that everyone will remember what to do when a disaster does occur.

## EMERGENCY SUPPLY KIT

- ✓ Battery-powered radio, flashlights, batteries
- ✓ Whistle
- ✓ First aid kit and manual
- ✓ Extra set of keys
- ✓ Extra pair of glasses
- ✓ Copies of documents (medical cards, passport, bank account numbers, insurance policies, birth and marriage certificates and names, addresses and telephone numbers of doctors)
- ✓ Water (1 gallon per person per day)
- ✓ Food (canned, no-cook, packaged snacks)
- ✓ Vitamins
- ✓ Manual can opener
- ✓ Cash and credit cards
- ✓ Change of clothing, rain gear and sturdy shoes
- ✓ Blankets or sleeping bags
- ✓ Fire extinguisher
- ✓ Large plastic bags for trash, waste, water protection
- ✓ Toilet paper and paper towels
- ✓ Personal items
- ✓ Cell phone and charger

## PET PREPAREDNESS

Preparing ahead of time and acting quickly are the best ways to keep your animals out of danger. They depend on you to be prepared in the event of a disaster situation. Check with your veterinarian for specific information on disaster preparedness.

Your pet emergency kit should include a bowl, food, pet medication, travel cage, kennel, leash, blanket for bedding, plastic bags and paper towels for disposing of waste, immunization records, pet medical history, and a favorite toy.